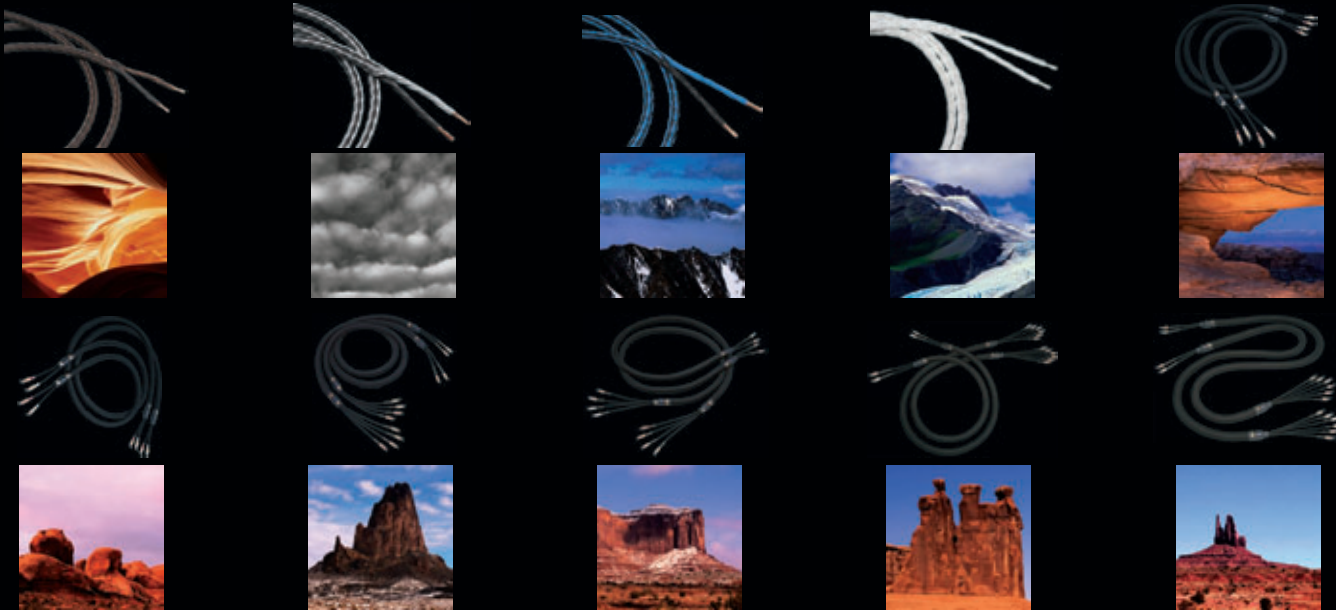


Introduction to Loudspeaker Cables



MUSIC IN HARMONY WITH SCIENCE

It was the 4PR that got it all started in 1979. In the mid '70s while working as a sound and lighting engineer Ray Kimber became increasingly disturbed by the buzzing, snaps, pops and crackles in the sound system which resulted from the high powered lighting used in conjunction with the audio. He set out to solve the problem by constructing speaker cables that would reject the noise. The finalized version of his braided wire concept not only rejected the RF noise but allowed the system to sound different, better, musical. While the 4PR enjoyed upgrades over time, other technologies emerged from the fertile minds and laboratory at KIMBER KABLE, all the time improving and expanding upon Ray Kimber's original cable concept and design.

The part played by cables in an audio or video system is not to be underestimated. Loudspeaker cables must be able to handle and deliver, with poise, the relatively high voltages and larger currents associated with the amplifier to speaker interface. The quality of the dielectric and conductors in combination with intelligent cable geometries are the most important factors in determining desirable electrical parameters. Through our own OSCaR™ (Objective Subjective Correlation and Results) engineering process we are able to make the critical link between scientific measurements and listening impressions.

Information on some of the unique technologies and materials used in the manufacture of KIMBER KABLE loudspeaker cables is listed below:



Special Formula PE Dielectric

A special recipe polyethylene dielectric that has carefully selected electrical and mechanical properties for a smooth, sweet and very natural sound.

Teflon® Dielectric

A high pressure, low temperature extruded Teflon® engineered for maximum signal transfer. The sound quality is accurate, detailed and has incredible dynamic contrasts.

VariStrand™ Ultra-pure and Hyper-pure Copper and Hyper-pure Silver Conductors

We begin with copper and silver formulations of extremely high purity and conductivity. VariStrand™ technology controls internal and external vibration by minimizing resonance within the cable stranding. This is accomplished by using variable sized strands in a specific ratio within each conductor.

KIMBER KABLE Proven Braiding Technique

Kimber's famous braided geometry is incredibly effective at reducing the effects of RF interference. Braided geometry also provides for increased performance with regard to signal flow, greatly benefiting audible performance. Whether incorporating our 4+4 or 8+8 conductor braids or our core centered braids, used in the Monocle™, BiFocal™ and TriFocal™ cables, each cable has been optimized to obtain certain electrical parameters and consequent sonic performance. The proprietary X38R core compound provides proper geometric spacing as well as unique acoustic damping and electrical properties. The ESD (electrostatic dissipative) yarn works electrostatically to improve signal fidelity, and creates an isolating matrix.

SPD and SBAN Spade and Banana Connectors

Our standard SPD spade connector provides a high quality connection that is far superior to cheap gold-plated spade connectors. The SBAN is a great banana plug both mechanically and electrically. It is convenient, affordable and provides for a smooth and neutral sound.

PostMaster™

Our patented spade lug is made from ultra-pure copper. A unique feature of this connector is the compressible wafer between the contacts, which maintains dynamic pressure on the binding post. This prevents an increase in impedance due to vibration or temperature changes. Pressure ridges insure a gas-tight contact which dramatically reduces contact resistance. The plating is our proprietary Ultraplate™ finish. The PostMaster™ is available in two sizes: PM-25 for 1/4" binding posts and PM-33 for 5/16" binding posts. Patent #5,108,320.

WBT® Sandwich Spades

A high current spade lug with an elastomeric shock absorber for progressive contact pressure eliminating structure-borne and air-borne noise as well as magnetostriction. The fully insulated body is safe to use and conforms to international safety standards. The WBT-0660 (6mm, 1/4") and WBT-0680 (8mm, 5/16") utilize a solder free crimp type connection fitted with two Torx™ screws (T6) for secure connection and optimum performance. Color code: red or white. Easy fit for wire size up to 10mm² (8 awg). Int. Pat. #19,813,370.709; Int. Pat. #49,811,554.2 Patent #6,319,078; Patent #D437,830 Patent #5,108,320

WBT® Banana Plugs

The WBT line of banana plugs includes three models; WBT-0600, WBT-0644 and WBT-0645. The WBT-0645 is a top quality CE compliant banana plug and is approved worldwide as a loudspeaker connector due to the safety pin design. Obtaining high contact pressure is possible due to an expanding inner spike. The extremely compact design also allows easy one hand operation. The sloping angle is easy on cable and equipment. The WBT-0645 is stackable for bi-wiring. Two Torx™ screws (T-6) are incorporated for extra-tight pressure connection and additional strain relief. Easy fit for wire size up to 10mm² (8 awg). Also available is the WBT-0644 Midline straight banana plug and the Topline WBT-0600 straight banana plug. International Patent #29,703,602 .5 Design Patent #M9,500,657.5



PR
Series



4PR Four + four
discrete conductors
[2 x 14 awg / 2.08mm²]



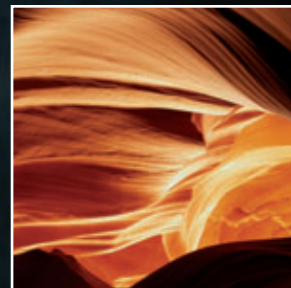
PR Series

LOUDSPEAKER CABLES

8PR Eight + eight
discrete conductors
[2 x 10 awg / 5.27mm²]

Special formula
PE dielectric. ■

High-purity copper ■



4PR SETTING THE STANDARD.

In 1979 this classic design put KIMBER KABLE on the map and after improvements over time, is still considered the reference for affordable loud-speaker cables. Millions of feet of this remarkable cable have been sold. The construction consists of four brown and four black conductors that utilize our proven braiding technique. The aggregate wire size is two 14 awg conductors. Even the most basic systems, old and new, will benefit significantly from this legendary performer. When demonstrating KIMBER KABLE to a new dealer, this cable is used with the most modest system available. With 4PR, the system performs as if costing twice as much. Bass and treble frequencies are allowed their full extension, while dynamics emerge unrestrained. The 4PR is also an excellent cable for professional and studio use due to its inherent ability to reject noise in any cable length.

“What can I say? This is a clear Best Buy.”

Richard Black – Hi-Fi Choice Issue 192

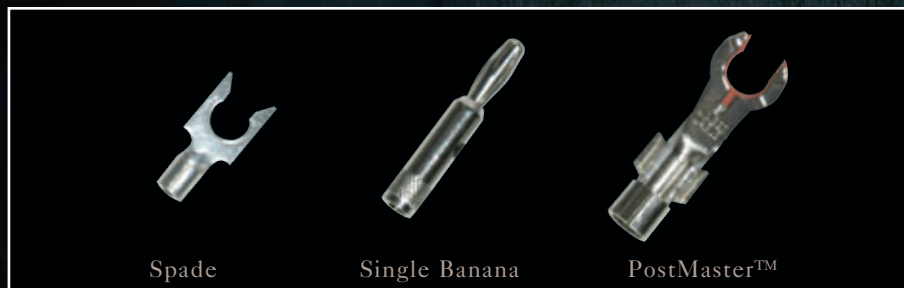
8PR FOR GREATER CURRENT DEMANDS.

The construction consists of eight brown and eight black conductors, arranged in a large format braid. Individual conductors are high-purity copper. The aggregate wire size is two 10 awg conductors. 8PR provides a sound that is full bodied and powerful, making it ideal for subwoofers and the low frequency section of bi-wired speakers as well as full range applications.

“...there is much to praise, with very fine detail and particularly striking command of wide dynamics. Image depth is very good and percussion notably clean and detailed, both strong points at this price.”

Hi-Fi Choice Issue 241

Connector Options



4VS

Four + four
discrete conductors
[2 x 13 awg / 2.63mm²]

VS
Series

VS Series

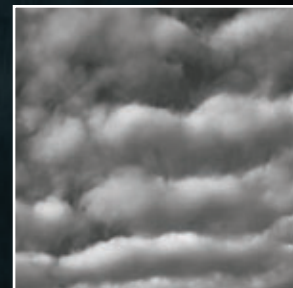
LOUDSPEAKER CABLES

8VS

Eight + eight
discrete conductors
[2 x 9 awg / 6.62mm²]

Special formula
PE dielectric

VariStrand™
Ultra-pure copper



4VS HIGH PERFORMANCE, AMAZING VALUE.

Consisting of four gray and four black conductors that utilize our proven braiding technique. The aggregate wire size is two 13 awg conductors. The VariStrand™, Ultra-pure copper conductor used in 4VS shares many similarities with the more advanced TC series cable. 4VS is smooth and refined in the midrange and treble, allowing for hours of fatigue-free performance without sacrificing detail. One of the audio world's finest performance bargains.

“...the bass, which is generally a Kimber strong point: deep and full but always controlled. ...the Kimber gave the cleanest and sweetest trumpet sound of the batch, never getting mixed up with the accompanying lines.”

Richard Black – Hi-Fi Choice Issue 183

8VS PERFORMANCE AND POWER.

Consisting of eight gray and eight black conductors, arranged in a large format braid. The conductors feature VariStrand™ conductor geometry and are drawn from Ultra-pure copper. The aggregate wire size is two 9 awg conductors. The smooth power and authority of 8VS make it a great match for full range speakers, subwoofers and the low frequency section of bi-wired loudspeakers.

“Tonal balance is finely judged, with clear, extended treble and full but not over-prominent bass (very tuneful), while the midband is well defined and rich in detail.... Imaging is very good with unusually assured depth, and dynamics are satisfyingly wide, with no loss of detail at heavy climaxes. All round, there's a creamy effortlessness about sounds through this cable....”

Hi-Fi Choice Issue 227

Connector Options



4TC

Four + four
discrete conductors
(2 x 13 awg / 2.63mm²)

TC
Series

TC Series

LOUDSPEAKER CABLES

8TC

Eight + eight
discrete conductors
(2 x 9 awg / 6.62mm²)

Teflon® dielectric

VariStrand™
Hyper-pure copper



4TC THE HIGH PERFORMANCE STANDARD.

Consisting of eight individual TCSS conductors, four blue and four black that utilize our proven braiding technique. The insulating dielectric is high pressure-low temperature-extruded Teflon®. The individual conductors are Hyper-pure copper, arranged in proven VariStrand™ conductor geometry. The aggregate wire size is two 13 awg conductors. The focus, transparency and transient speed of 4TC are stunning. 4TC continues to receive enthusiastic reviews and recommendations from consumers and critics worldwide.

“It gives a solid, three-dimensional image.... It was one of the few cables that allowed listeners to hear clearly all the subtle changes in orchestration....”

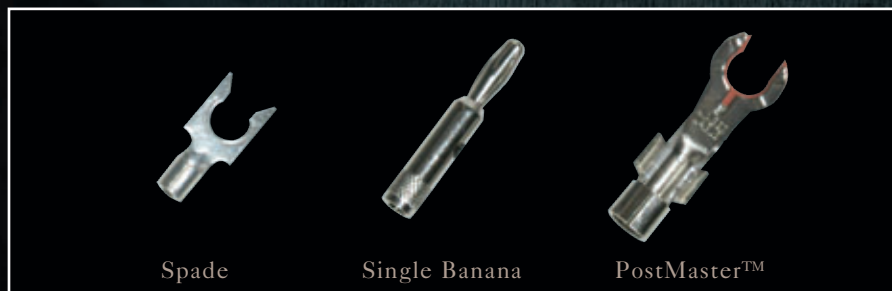
Richard Black – Hi-Fi Choice Issue 168

8TC LEGENDARY MUSICALITY.

Consisting of sixteen individual TCSS conductors, eight blue and eight black, arranged in a large format braid. Individual conductors are Hyper-pure copper and utilize our proven VariStrand™ conductor geometry. The insulating dielectric is a high pressure-low temperature-extruded Teflon®. The aggregate wire size is two 9 awg conductors. By virtue of its full, accurate and dimensional sound, 8TC ranks as one of the best high-end audio values of all time and, without question, is the best sounding moderately priced cable on the market.

“The most accurate performer.”

Ben Duncan – Hi-Fi News & Record Review Vol. 42 No. 2



Connector Options



4AG

Four + four
discrete conductors
[2 x 14 awg / 2.08mm²]

AG
Series

AG Series

LOUDSPEAKER CABLES

8AG

Eight + eight
discrete conductors
[2 x 10 awg / 5.27mm²]

Teflon® dielectric

VariStrand™
Hyper-pure silver



4AG THE SILVER ADVANTAGE.

Four positive and four negative VariStrand™, Hyper-pure silver conductors make up this heavenly cable. The aggregate wire size is two 14 awg conductors. The insulating dielectric is pressure-extruded, virgin Teflon®. The listener will experience an expansive depth of image, with resolution of the most minute details appearing from an absolutely silent background. Images remain tightly focused in their respective individual places. 4AG is what musical dreams are made of.

“...it is capable of the best performance level I’ve yet to hear from a cable: true state-of-the-art.”

Dick Olsher – Stereophile Vol. 11 No. 7

8AG EVERYTHING YOU EXPECT - AND MORE.

8AG uses twice the number of VariStrand™, Hyper-pure silver conductors as 4AG for an aggregate wire size of two 10 awg conductors. The insulating dielectric is pressure-extruded, clear virgin Teflon®. The power, dynamics and timbral realism, at all frequencies, is breathtaking. 8AG uncovers the true essence of music.

“...beyond Class A;.... Background noise was essentially absent. The music appeared to spring forth from a silent and velvety black background. The soundstage was exceptionally well focused and transparent. Resolution of low-level detail and of massed voices was incredible. Bass detail and sibilant control were almost beyond reproach. And always, that convincing spatial fusion of harmonic overtones.”

Dick Olsher – Stereophile Vol. 11 No. 7

Standard Connector Options



Upgrade Connector Options



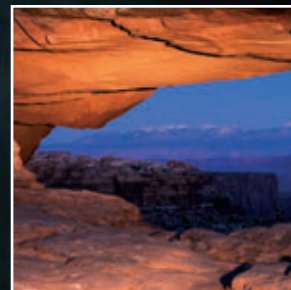
Monocle-X

LOUDSPEAKER CABLE



WBT® Cu connectors ■

Sixteen
discrete conductors
[10 awg/5.3mm²] ■



WHAT YOUR SYSTEM IS BEGGING FOR.

Monocle-X™ brings an unprecedented price-to-performance ratio to the audio cable world. The level of engineering, technology and beauty that this cable provides are without equal - in particular when considering its price. The transparency and accuracy of Monocle-X™ is presented to the listener in true KIMBER KABLE fashion. Monocle-X™ is comprised of sixteen individual VariStrand™ conductors, symmetrically inter-woven around the proprietary X38R core compound. Monocle-X™ is terminated with WBT® connectors.

“Wide open with see-through transparency, yet possessed of incredible smoothness and no vestige of hardness. ...speedy dynamics are delivered with body and richness.”



- 1 - sixteen discrete copper, VariStrand™ conductors
- 2 - Teflon® composite dielectric
- 3 - polyethylene dielectric
- 4 - X38R core compound
- 5 - cable skin

Standard Connector Options



Upgrade Connector Options



Monocle
XL

Monocle-XL

LOUDSPEAKER CABLE



WBT® Cu connectors

Twenty-four
discrete conductors
[8 awg / 8.3mm²]



TRANSLATING SCIENCE INTO INCREDIBLE SOUND.

Monocle-XL™ is a fully optimized cable engineered to offer the most intimate interface of amplifier and single input loudspeaker. Compared to the Monocle-X™, Monocle-XL™ offers increased dynamic range with greater speed and acceleration. Timbre, space, detail, intimacy..., the Monocle-XL™ delivers musical nuances and color with emotion, truth and realism. Monocle-XL™ features twenty-four individual VariStrand™ conductors, symmetrically inter-woven around the proprietary X38R core compound. All ends are terminated with WBT® connectors.

“The weight, power and tonality of this speaker cable are amazing. The mid range is transparent and so dynamic. And the highs - just perfect.”



- 1 - twenty-four discrete copper, VariStrand™ conductors
- 2 - Teflon® composite dielectric
- 3 - polyethylene dielectric
- 4 - X38R core compound
- 5 - cable skin

Standard Connector Options



Upgrade Connector Options



loudspeaker cables

BiFocal
X

BiFocal-X

LOUDSPEAKER CABLE



WBT® Cu connectors

Eighteen
discrete conductors
[9 awg / 6.6mm²]



UNIQUE “BI-WIRE” TECHNOLOGY.

BiFocal-X™ is as elegant as its performance oriented. Designed specifically for “bi-wire” loudspeaker systems, the BiFocal-X™ delivers the clarity and openness sought after by speaker designers and enthusiasts alike. The dual-concentric circuits of the BiFocal-X™ feature a total of eighteen individual VariStrand™ conductors: six for the inner, “high-frequency” circuit and twelve for the outer, “low-frequency” circuit. Electrical isolation is accomplished by correlating circuit geometries with an isolating ESD matrix. BiFocal-X™ is terminated with WBT® connectors.

“...the BiFocal’s strengths...; detail, speed, sharp transients, exceptional reproduction of dynamic and pitch subtleties. ...how easy it is to view the BiFocal as an evolutionary advance.”

Brian Damkroger – Stereophile Vol. 21, No. 5



- | | |
|----------------------------------------------------------|------------------------|
| 1 - (HIGH) six discrete copper, VariStrand™ conductors | 5 - ESD yarn |
| 2 - (LOW) twelve discrete copper, VariStrand™ conductors | 6 - isolating matrix |
| 3 - polyethylene dielectric | 7 - X38R core compound |
| 4 - Teflon® composite dielectric | 8 - cable skin |

Standard Connector Options



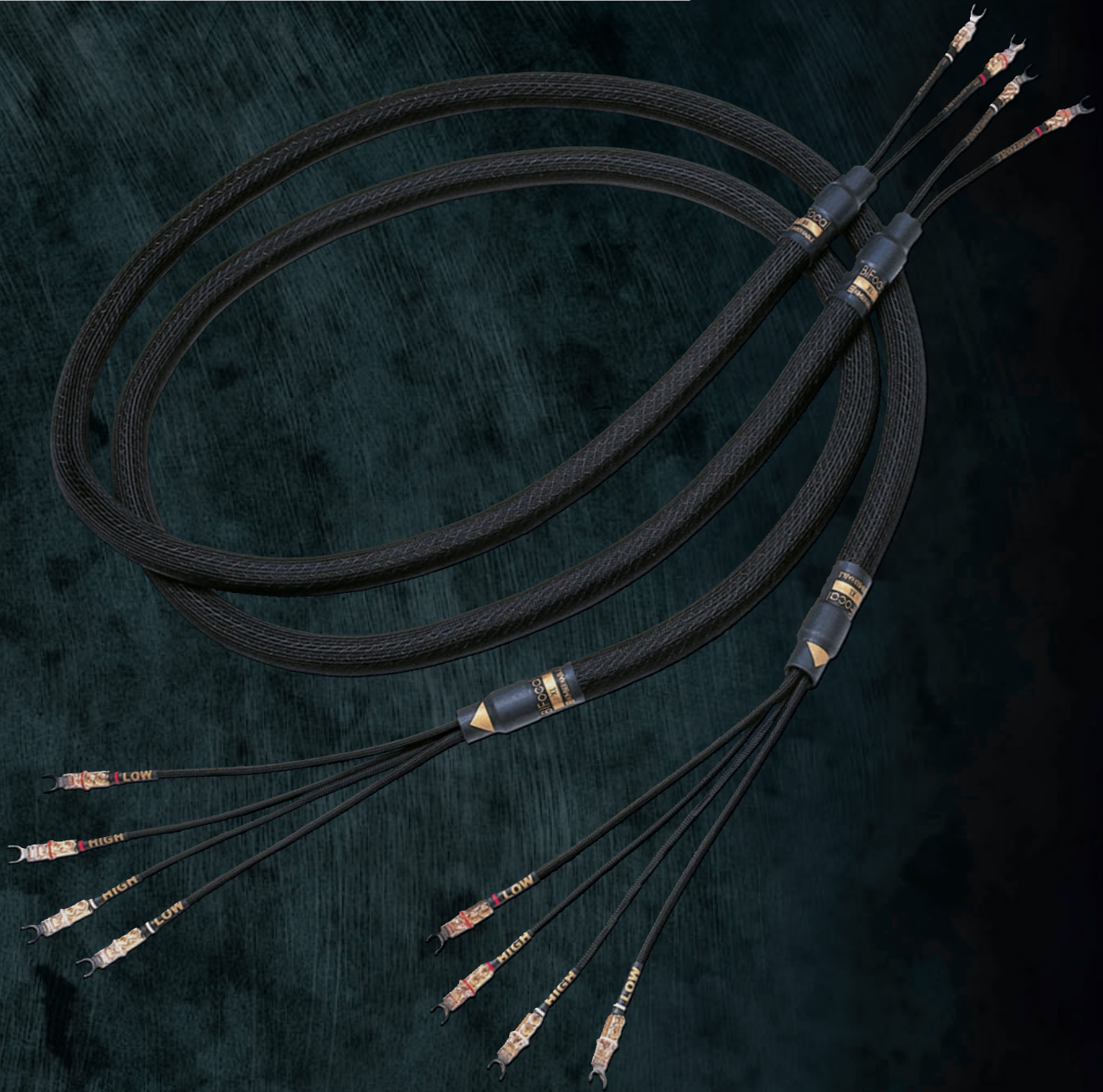
Upgrade Connector Options



BiFocal
XL

BiFocal-XL

LOUDSPEAKER CABLE



WBT® Cu connectors

Thirty-six
discrete conductors
[5.5 awg / 15mm²]

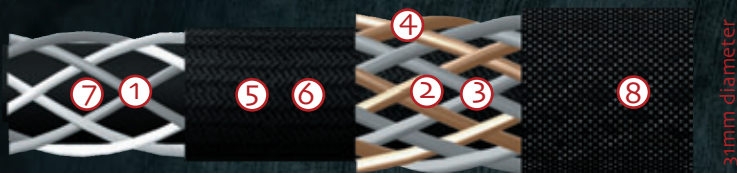


DESIGNED FOR THE FINEST “BI-WIRE” LOUDSPEAKERS.

BiFocal-XL™ has impressed consumers and reviewers around the globe. Similar in construction and technology to BiFocal-X™, the BiFocal-XL™ is designed for increased speed, articulation and impact in particular when used with larger loudspeaker systems. BiFocal-XL™ features a total of thirty-six individual VariStrand™ conductors: twelve for the inner, “high-frequency” circuit and twenty-four for the outer, “low-frequency” circuit. All cable ends are terminated with WBT® connectors.

“The Kimbers also offer more headroom, dynamics, air, effortless feeling, palpability and better defined contours. ...the Kimber’s considerably bigger and deeper soundstage gives you the feeling of a more relaxed, effortless, cleaner and more see-through, sharper sound.”

Adnan Arduman – Stereo Times August 21, 2001



- | | |
|---------------------------------------------------------------|------------------------|
| 1 - (HIGH) twelve discrete copper, VariStrand™ conductors | 5 - ESD yarn |
| 2 - (LOW) twenty-four discrete copper, VariStrand™ conductors | 6 - isolating matrix |
| 3 - polyethylene dielectric | 7 - X3BR core compound |
| 4 - Teflon® composite dielectric | 8 - cable skin |

Standard Connector Options



Upgrade Connector Options



TriFocal
X

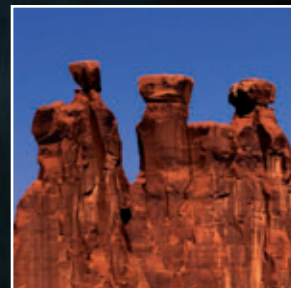
TriFocal-X

LOUDSPEAKER CABLE



WBT® Cu connectors

Twenty-eight
discrete conductors
[7.5 awg / 9.5mm²]



“TRI-WIRED” APPLICATION OF MONOCLE™ TECHNOLOGY.

TriFocal™ cables are a testament to KIMBER KABLE’s manufacturing processes and the unparalleled pursuit of excellence. Comprised of hundreds of individual components per pair of cables the TriFocal-X™ is formatted in a seven layer, poly-concentric geometry. Interaction between “HIGH”, “MID” and “LOW” frequency circuits are dramatically lower than other internal “tri-wire” cables. RF and EMI problems have been identified and solved using proprietary balanced KIMBER KABLE technologies. Your tri-wireable speakers never had it so good. Supplied with WBT® connectors.



- | | |
|-----------------------------------------------------------|----------------------------------|
| 1 - (HIGH) four discrete copper, VariStrand™ conductors | 5 - Teflon® composite dielectric |
| 2 - (MID) eight discrete copper, VariStrand™ conductors | 6 - isolating matrix |
| 3 - (LOW) sixteen discrete copper, VariStrand™ conductors | 7 - X38R core compound |
| 4 - polyethylene dielectric | 8 - cable skin |

Standard Connector Options



Upgrade Connector Options



luidspeaker cables

TriFocal
XL

TriFocal-XL

LOUDSPEAKER CABLE



WBT® Cu connectors

Forty-two
discrete conductors
[3 awg / 26.7mm²]



FOR THE FULL MUSICAL EXPRESSION OF YOUR "TRI-WIRED" LOUSPEAKERS.

Comprised of hundreds of components per pair of cables, the TriFocal-XL™ is formatted in a seven layer, poly-concentric geometry. Aside from the Model 88 - The Black Pearl™, this is quite possibly the most elaborate loudspeaker cable ever designed. Termination alone on this titan takes a full eight hours to complete a single matched pair. A production run of 250 feet (76 metres) of this cable takes over 50 hours of machine time. TriFocal-XL™ will allow the most intimate union possible between "tri-wire" loudspeakers and an amplifier. All ends are furnished with WBT® connectors.



- | | |
|---------------------------------------------------------------|----------------------------------|
| 1 - (HIGH) six discrete copper, VariStrand™ conductors | 5 - Teflon® composite dielectric |
| 2 - (MID) twelve discrete copper, VariStrand™ conductors | 6 - isolating matrix |
| 3 - (LOW) twenty-four discrete copper, VariStrand™ conductors | 7 - X38R core compound |
| 4 - polyethylene dielectric | 8 - cable skin |

Standard Connector Options



WBT®-0660Cu

WBT®-0680Cu

WBT®-0645

Upgrade Connector Options



WBT®-0660Ag

WBT®-0680Ag

WBT®-0600
(speaker end only)

